



REF: LSHGPG726

**THIS PROPERTY IS AVAILABLE TO BOOK NOW IN ADVANCE FOR AUG/SEP 2012**

**AVAILABLE: AUG/SEP 2012 VIEW: FROM JANUARY 2012**

**CALL 020 8444 4413 FOR VIEWINGS**



**AN OUTSTANDING 6 BEDROOM 4 BATH/SHOWER ROOM HOUSE OFFERED ON AN ALL BILLS INCLUSIVE BASIS WITH 50MB INTERNET, LANDLINE TELEPHONE AND SKY TV**

**CLICK: [360 VIRTUAL TOUR](#) CLICK: [VIDEO](#)**

- 6 BEDROOMS EACH WITH DOUBLE BED OWN PRIVATE WASHBASIN AND FLAT SCREEN TV PLUS PREMIUM FURNITURE PACKAGE OF DESK CHAIR SHELVING AND CHEST OF DRAWERS
- 1 FULL MARBLE TILED BATHROOM WITH POWERSHOWER
- 3 ADDITIONAL MARBLE TILED SEPARATE SHOWER ROOMS WITH POWERSHOWERS
- COMMUNAL ROOM WITH 32" FLAT SCREEN HDTV PLUS SKY TV AND LEATHER SOFAS PLUS BREAKFAST TABLE WITH CHAIRS
- X1 WASHING MACHINE X1 WASHER DRYER X1 BOSCH SEPARATE DRYER AND X2 FRIDGE FREEZERS
- UNLIMITED AND UNMONITORED ALL BILLS INCLUSIVE PACKAGE (GAS ELECTRIC WATER HEATING FREEVIEW TV AND TV LICENSING)
- FREE 50 MB HIGH SPEED INTERNET CAT6 WIRED AND WIRELESS N PLUS ADDITIONAL SEPARATE BACK UP ADSL INTERNET SUPPLY
- FREE LANDLINE WITH INTERNATIONAL OUTGOING CALLS INCLUDED
- LARGE WAREHOUSE STYLE WHITE BOARDS FOR POSTERS
- DECKED MAINTENANCE FREE DESIGNER GARDEN WITH SHED
- INTRUDER ALARM SMOKE AND CARBON MONOXIDE ALARMS



LONDON STUDENT HOUSING GROUP IS PART OF THE LONDON STUDENT GROUP AND PLACE GROUP UK  
STUDENT HOUSING VIEWINGS COMMENCE EACH JANUARY FOR THE NEXT ACADEMIC YEAR  
CALL US ON 020 8444 4413 OR 020 3137 1155

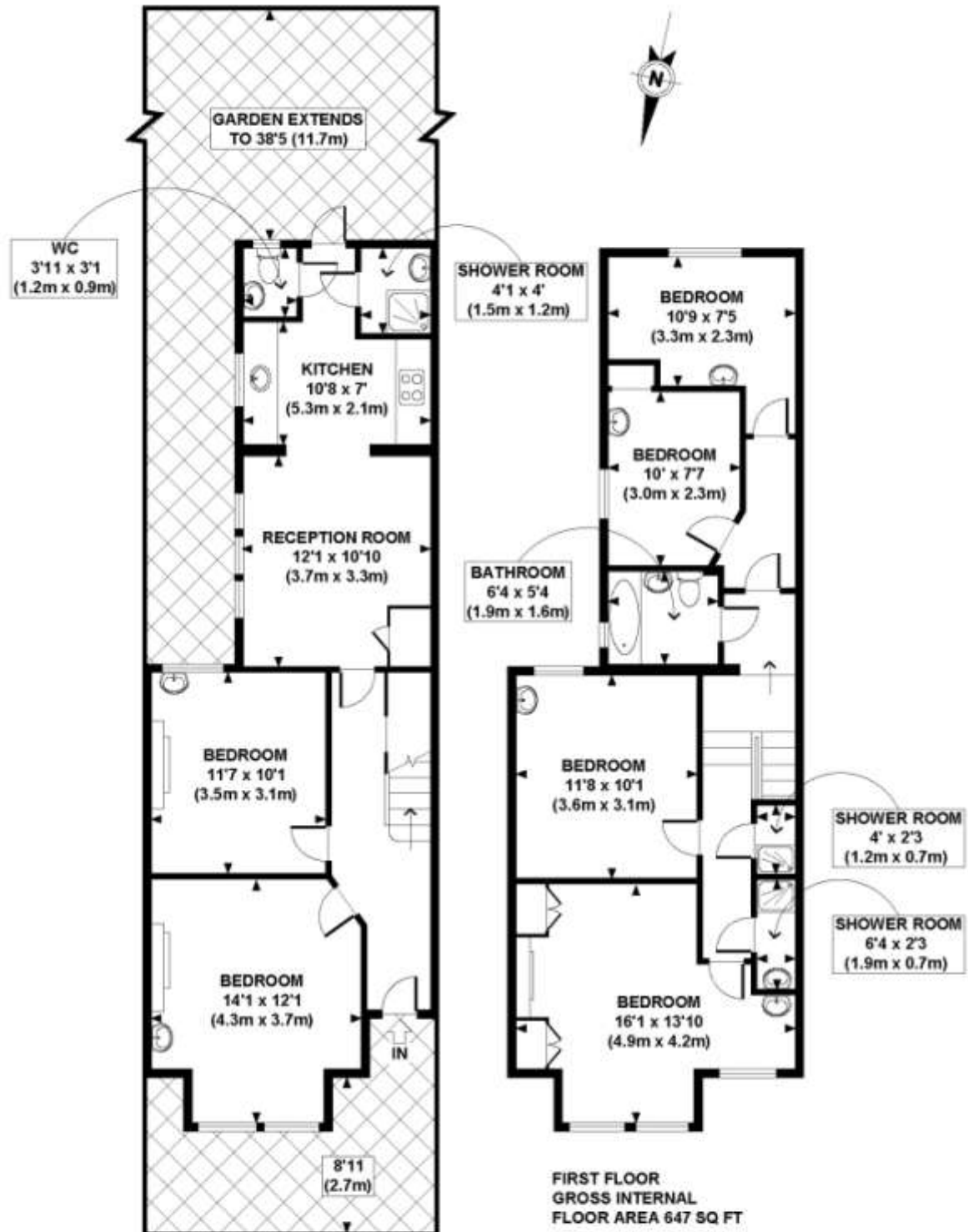


REF: LSHGPG726

**THIS PROPERTY IS AVAILABLE TO BOOK NOW IN ADVANCE FOR AUG/SEP 2012**

**AVAILABLE: AUG/SEP 2012 VIEW: FROM JANUARY 2012**

**CALL 020 8444 4413 FOR VIEWINGS**



**GROUND FLOOR**  
GROSS INTERNAL FLOOR AREA 640 SQ FT

**FIRST FLOOR**  
GROSS INTERNAL FLOOR AREA 647 SQ FT

APPROX. GROSS INTERNAL FLOOR AREA 1287 SQ FT / 120 SQ M

Ref: MJ PLACE GROUP - 060810 Copyright [photoplan.co.uk](http://photoplan.co.uk)

Floorplans are for identification and guideline purposes only, not to scale.  
Compliant with RICS code of measuring practice.



REF: LSHGPG726

**THIS PROPERTY IS AVAILABLE TO BOOK NOW IN ADVANCE FOR AUG/SEP 2012**

**AVAILABLE: AUG/SEP 2012 VIEW: FROM JANUARY 2012**

**CALL 020 8444 4413 FOR VIEWINGS**



#### **MORE INFORMATION:**

Premium student housing in North London from London Student Housing Group.

Together with London Student Landlords and London Student Rentals we are part of The London Student Group and Place Group UK.

With the backing of Place Group UK, students are protected by group regulation and accountability through the government backed Housing Ombudsman and the RICS Property Ombudsman and our registration as a private landlord with the University of London Housing Service (ULHS), City University Accommodation Office, Westminster University Student Accommodation Office and London Metropolitan University Housing Office.

We are currently the most well regulated and accountable private landlords in London.

Each house is now offered to students on our legendary "all inclusive" package including all utility bills (gas electric and water) 50mb fibre optic internet (plus back up ADSL internet), landline telephone (with free calls) and SKY TV.

We now offer the best "all inclusive" package to students in London, with no hassle and the backing of our no small print guarantee.

#### **TO VIEW THIS HOUSE:**

Call us on 020 8444 4413 or 020 3137 1155

Email us on [students@londonstudenthousing.co.uk](mailto:students@londonstudenthousing.co.uk)

**LONDON STUDENT HOUSING GROUP IS PART OF THE LONDON STUDENT GROUP AND PLACE GROUP UK  
STUDENT HOUSING VIEWINGS COMMENCE EACH JANUARY FOR THE NEXT ACADEMIC YEAR  
CALL US ON 020 8444 4413 OR 020 3137 1155**



REF: LSHGPG726

**THIS PROPERTY IS AVAILABLE TO BOOK NOW IN ADVANCE FOR AUG/SEP 2012**

**AVAILABLE: AUG/SEP 2012 VIEW: FROM JANUARY 2012**

**CALL 020 8444 4413 FOR VIEWINGS**



LONDON STUDENT HOUSING GROUP IS PART OF THE LONDON STUDENT GROUP AND PLACE GROUP UK  
STUDENT HOUSING VIEWINGS COMMENCE EACH JANUARY FOR THE NEXT ACADEMIC YEAR  
CALL US ON 020 8444 4413 OR 020 3137 1155



REF: LSHGPG726

**THIS PROPERTY IS AVAILABLE TO BOOK NOW IN ADVANCE FOR AUG/SEP 2012**

**AVAILABLE: AUG/SEP 2012 VIEW: FROM JANUARY 2012**

**CALL 020 8444 4413 FOR VIEWINGS**



LONDON STUDENT HOUSING GROUP IS PART OF THE LONDON STUDENT GROUP AND PLACE GROUP UK  
STUDENT HOUSING VIEWINGS COMMENCE EACH JANUARY FOR THE NEXT ACADEMIC YEAR  
CALL US ON 020 8444 4413 OR 020 3137 1155



REF: LSHGPG726

**THIS PROPERTY IS AVAILABLE TO BOOK NOW IN ADVANCE FOR AUG/SEP 2012**

**AVAILABLE: AUG/SEP 2012 VIEW: FROM JANUARY 2012**

**CALL 020 8444 4413 FOR VIEWINGS**



LONDON STUDENT HOUSING GROUP IS PART OF THE LONDON STUDENT GROUP AND PLACE GROUP UK  
STUDENT HOUSING VIEWINGS COMMENCE EACH JANUARY FOR THE NEXT ACADEMIC YEAR  
CALL US ON 020 8444 4413 OR 020 3137 1155



REF: LSHGPG726

**THIS PROPERTY IS AVAILABLE TO BOOK NOW IN ADVANCE FOR AUG/SEP 2012**

**AVAILABLE: AUG/SEP 2012 VIEW: FROM JANUARY 2012**

**CALL 020 8444 4413 FOR VIEWINGS**



LONDON STUDENT HOUSING GROUP IS PART OF THE LONDON STUDENT GROUP AND PLACE GROUP UK  
STUDENT HOUSING VIEWINGS COMMENCE EACH JANUARY FOR THE NEXT ACADEMIC YEAR  
CALL US ON 020 8444 4413 OR 020 3137 1155



REF: LSHGPG726

**THIS PROPERTY IS AVAILABLE TO BOOK NOW IN ADVANCE FOR AUG/SEP 2012**

**AVAILABLE: AUG/SEP 2012 VIEW: FROM JANUARY 2012**

**CALL 020 8444 4413 FOR VIEWINGS**



LONDON STUDENT HOUSING GROUP IS PART OF THE LONDON STUDENT GROUP AND PLACE GROUP UK  
STUDENT HOUSING VIEWINGS COMMENCE EACH JANUARY FOR THE NEXT ACADEMIC YEAR  
CALL US ON 020 8444 4413 OR 020 3137 1155



REF: LSHGPG726

**THIS PROPERTY IS AVAILABLE TO BOOK NOW IN ADVANCE FOR AUG/SEP 2012**

**AVAILABLE: AUG/SEP 2012 VIEW: FROM JANUARY 2012**

**CALL 020 8444 4413 FOR VIEWINGS**



LONDON STUDENT HOUSING GROUP IS PART OF THE LONDON STUDENT GROUP AND PLACE GROUP UK  
STUDENT HOUSING VIEWINGS COMMENCE EACH JANUARY FOR THE NEXT ACADEMIC YEAR  
CALL US ON 020 8444 4413 OR 020 3137 1155



REF: LSHGPG726

**THIS PROPERTY IS AVAILABLE TO BOOK NOW IN ADVANCE FOR AUG/SEP 2012**

**AVAILABLE: AUG/SEP 2012 VIEW: FROM JANUARY 2012**

**CALL 020 8444 4413 FOR VIEWINGS**



LONDON STUDENT HOUSING GROUP IS PART OF THE LONDON STUDENT GROUP AND PLACE GROUP UK  
STUDENT HOUSING VIEWINGS COMMENCE EACH JANUARY FOR THE NEXT ACADEMIC YEAR  
CALL US ON 020 8444 4413 OR 020 3137 1155



REF: LSHGPG726

**THIS PROPERTY IS AVAILABLE TO BOOK NOW IN ADVANCE FOR AUG/SEP 2012**

**AVAILABLE: AUG/SEP 2012 VIEW: FROM JANUARY 2012**

**CALL 020 8444 4413 FOR VIEWINGS**



LONDON STUDENT HOUSING GROUP IS PART OF THE LONDON STUDENT GROUP AND PLACE GROUP UK  
STUDENT HOUSING VIEWINGS COMMENCE EACH JANUARY FOR THE NEXT ACADEMIC YEAR  
CALL US ON 020 8444 4413 OR 020 3137 1155



REF: LSHGPG726

**THIS PROPERTY IS AVAILABLE TO BOOK NOW IN ADVANCE FOR AUG/SEP 2012**

**AVAILABLE: AUG/SEP 2012 VIEW: FROM JANUARY 2012**

**CALL 020 8444 4413 FOR VIEWINGS**



LONDON STUDENT HOUSING GROUP IS PART OF THE LONDON STUDENT GROUP AND PLACE GROUP UK  
STUDENT HOUSING VIEWINGS COMMENCE EACH JANUARY FOR THE NEXT ACADEMIC YEAR  
CALL US ON 020 8444 4413 OR 020 3137 1155



REF: LSHGPG726

**THIS PROPERTY IS AVAILABLE TO BOOK NOW IN ADVANCE FOR AUG/SEP 2012**

**AVAILABLE: AUG/SEP 2012 VIEW: FROM JANUARY 2012**

**CALL 020 8444 4413 FOR VIEWINGS**



LONDON STUDENT HOUSING GROUP IS PART OF THE LONDON STUDENT GROUP AND PLACE GROUP UK  
STUDENT HOUSING VIEWINGS COMMENCE EACH JANUARY FOR THE NEXT ACADEMIC YEAR  
CALL US ON 020 8444 4413 OR 020 3137 1155



REF: LSHGPG726

**THIS PROPERTY IS AVAILABLE TO BOOK NOW IN ADVANCE FOR AUG/SEP 2012**

**AVAILABLE: AUG/SEP 2012 VIEW: FROM JANUARY 2012**

**CALL 020 8444 4413 FOR VIEWINGS**



LONDON STUDENT HOUSING GROUP IS PART OF THE LONDON STUDENT GROUP AND PLACE GROUP UK  
STUDENT HOUSING VIEWINGS COMMENCE EACH JANUARY FOR THE NEXT ACADEMIC YEAR  
CALL US ON 020 8444 4413 OR 020 3137 1155



REF: LSHGPG726

**THIS PROPERTY IS AVAILABLE TO BOOK NOW IN ADVANCE FOR AUG/SEP 2012**

**AVAILABLE: AUG/SEP 2012 VIEW: FROM JANUARY 2012**

**CALL 020 8444 4413 FOR VIEWINGS**



LONDON STUDENT HOUSING GROUP IS PART OF THE LONDON STUDENT GROUP AND PLACE GROUP UK  
STUDENT HOUSING VIEWINGS COMMENCE EACH JANUARY FOR THE NEXT ACADEMIC YEAR  
CALL US ON 020 8444 4413 OR 020 3137 1155



REF: LSHGPG726

**THIS PROPERTY IS AVAILABLE TO BOOK NOW IN ADVANCE FOR AUG/SEP 2012**

**AVAILABLE: AUG/SEP 2012 VIEW: FROM JANUARY 2012**

**CALL 020 8444 4413 FOR VIEWINGS**



LONDON STUDENT HOUSING GROUP IS PART OF THE LONDON STUDENT GROUP AND PLACE GROUP UK  
STUDENT HOUSING VIEWINGS COMMENCE EACH JANUARY FOR THE NEXT ACADEMIC YEAR  
CALL US ON 020 8444 4413 OR 020 3137 1155



REF: LSHGPG726

**THIS PROPERTY IS AVAILABLE TO BOOK NOW IN ADVANCE FOR AUG/SEP 2012**

**AVAILABLE: AUG/SEP 2012 VIEW: FROM JANUARY 2012**

**CALL 020 8444 4413 FOR VIEWINGS**



LONDON STUDENT HOUSING GROUP IS PART OF THE LONDON STUDENT GROUP AND PLACE GROUP UK  
STUDENT HOUSING VIEWINGS COMMENCE EACH JANUARY FOR THE NEXT ACADEMIC YEAR  
CALL US ON 020 8444 4413 OR 020 3137 1155



REF: LSHGPG726

**THIS PROPERTY IS AVAILABLE TO BOOK NOW IN ADVANCE FOR AUG/SEP 2012**

**AVAILABLE: AUG/SEP 2012 VIEW: FROM JANUARY 2012**

**CALL 020 8444 4413 FOR VIEWINGS**



LONDON STUDENT HOUSING GROUP IS PART OF THE LONDON STUDENT GROUP AND PLACE GROUP UK  
STUDENT HOUSING VIEWINGS COMMENCE EACH JANUARY FOR THE NEXT ACADEMIC YEAR  
CALL US ON 020 8444 4413 OR 020 3137 1155



REF: LSHGPG726

**THIS PROPERTY IS AVAILABLE TO BOOK NOW IN ADVANCE FOR AUG/SEP 2012**

**AVAILABLE: AUG/SEP 2012 VIEW: FROM JANUARY 2012**

**CALL 020 8444 4413 FOR VIEWINGS**



LONDON STUDENT HOUSING GROUP IS PART OF THE LONDON STUDENT GROUP AND PLACE GROUP UK  
STUDENT HOUSING VIEWINGS COMMENCE EACH JANUARY FOR THE NEXT ACADEMIC YEAR  
CALL US ON 020 8444 4413 OR 020 3137 1155



REF: LSHGPG726

**THIS PROPERTY IS AVAILABLE TO BOOK NOW IN ADVANCE FOR AUG/SEP 2012**

**AVAILABLE: AUG/SEP 2012 VIEW: FROM JANUARY 2012**

**CALL 020 8444 4413 FOR VIEWINGS**



LONDON STUDENT HOUSING GROUP IS PART OF THE LONDON STUDENT GROUP AND PLACE GROUP UK  
STUDENT HOUSING VIEWINGS COMMENCE EACH JANUARY FOR THE NEXT ACADEMIC YEAR  
CALL US ON 020 8444 4413 OR 020 3137 1155



REF: LSHGPG726

**THIS PROPERTY IS AVAILABLE TO BOOK NOW IN ADVANCE FOR AUG/SEP 2012**

**AVAILABLE: AUG/SEP 2012 VIEW: FROM JANUARY 2012**

**CALL 020 8444 4413 FOR VIEWINGS**



LONDON STUDENT HOUSING GROUP IS PART OF THE LONDON STUDENT GROUP AND PLACE GROUP UK  
STUDENT HOUSING VIEWINGS COMMENCE EACH JANUARY FOR THE NEXT ACADEMIC YEAR  
CALL US ON 020 8444 4413 OR 020 3137 1155



REF: LSHGPG726

**THIS PROPERTY IS AVAILABLE TO BOOK NOW IN ADVANCE FOR AUG/SEP 2012**

**AVAILABLE: AUG/SEP 2012 VIEW: FROM JANUARY 2012**

**CALL 020 8444 4413 FOR VIEWINGS**



LONDON STUDENT HOUSING GROUP IS PART OF THE LONDON STUDENT GROUP AND PLACE GROUP UK  
STUDENT HOUSING VIEWINGS COMMENCE EACH JANUARY FOR THE NEXT ACADEMIC YEAR  
CALL US ON 020 8444 4413 OR 020 3137 1155



REF: LSHGPG726

**THIS PROPERTY IS AVAILABLE TO BOOK NOW IN ADVANCE FOR AUG/SEP 2012**

**AVAILABLE: AUG/SEP 2012 VIEW: FROM JANUARY 2012**

**CALL 020 8444 4413 FOR VIEWINGS**



LONDON STUDENT HOUSING GROUP IS PART OF THE LONDON STUDENT GROUP AND PLACE GROUP UK  
STUDENT HOUSING VIEWINGS COMMENCE EACH JANUARY FOR THE NEXT ACADEMIC YEAR  
CALL US ON 020 8444 4413 OR 020 3137 1155



REF: LSHGPG726

**THIS PROPERTY IS AVAILABLE TO BOOK NOW IN ADVANCE FOR AUG/SEP 2012**

**AVAILABLE: AUG/SEP 2012 VIEW: FROM JANUARY 2012**

**CALL 020 8444 4413 FOR VIEWINGS**



LONDON STUDENT HOUSING GROUP IS PART OF THE LONDON STUDENT GROUP AND PLACE GROUP UK  
STUDENT HOUSING VIEWINGS COMMENCE EACH JANUARY FOR THE NEXT ACADEMIC YEAR  
CALL US ON 020 8444 4413 OR 020 3137 1155



REF: LSHGPG726

**THIS PROPERTY IS AVAILABLE TO BOOK NOW IN ADVANCE FOR AUG/SEP 2012**

**AVAILABLE: AUG/SEP 2012 VIEW: FROM JANUARY 2012**

**CALL 020 8444 4413 FOR VIEWINGS**



LONDON STUDENT HOUSING GROUP IS PART OF THE LONDON STUDENT GROUP AND PLACE GROUP UK  
STUDENT HOUSING VIEWINGS COMMENCE EACH JANUARY FOR THE NEXT ACADEMIC YEAR  
CALL US ON 020 8444 4413 OR 020 3137 1155



REF: LSHGPG726

**THIS PROPERTY IS AVAILABLE TO BOOK NOW IN ADVANCE FOR AUG/SEP 2012**

**AVAILABLE: AUG/SEP 2012 VIEW: FROM JANUARY 2012**

**CALL 020 8444 4413 FOR VIEWINGS**



LONDON STUDENT HOUSING GROUP IS PART OF THE LONDON STUDENT GROUP AND PLACE GROUP UK  
STUDENT HOUSING VIEWINGS COMMENCE EACH JANUARY FOR THE NEXT ACADEMIC YEAR  
CALL US ON 020 8444 4413 OR 020 3137 1155



REF: LSHGPG726

**THIS PROPERTY IS AVAILABLE TO BOOK NOW IN ADVANCE FOR AUG/SEP 2012**

**AVAILABLE: AUG/SEP 2012 VIEW: FROM JANUARY 2012**

**CALL 020 8444 4413 FOR VIEWINGS**



LONDON STUDENT HOUSING GROUP IS PART OF THE LONDON STUDENT GROUP AND PLACE GROUP UK  
STUDENT HOUSING VIEWINGS COMMENCE EACH JANUARY FOR THE NEXT ACADEMIC YEAR  
CALL US ON 020 8444 4413 OR 020 3137 1155



REF: LSHGPG726

**THIS PROPERTY IS AVAILABLE TO BOOK NOW IN ADVANCE FOR AUG/SEP 2012**

**AVAILABLE: AUG/SEP 2012 VIEW: FROM JANUARY 2012**

**CALL 020 8444 4413 FOR VIEWINGS**



**(C) PLACE GROUP UK 17 HANOVER SQUARE LONDON W1S 1HU 020 3137 6677**

[WWW.LONDONSTUDENTHOUSING.CO.UK](http://WWW.LONDONSTUDENTHOUSING.CO.UK) [WWW.PLACEGROUPEUK.CO.UK](http://WWW.PLACEGROUPEUK.CO.UK) [WWW.PLACE-HOMES.CO.UK](http://WWW.PLACE-HOMES.CO.UK)

[WWW.PLACE4STUDENTS.CO.UK](http://WWW.PLACE4STUDENTS.CO.UK) [WWW.PLACE-NEWS.CO.UK](http://WWW.PLACE-NEWS.CO.UK) [WWW.JUSTONEPLACE.NET](http://WWW.JUSTONEPLACE.NET)

**LONDON STUDENT HOUSING GROUP IS PART OF THE LONDON STUDENT GROUP AND PLACE GROUP UK  
STUDENT HOUSING VIEWINGS COMMENCE EACH JANUARY FOR THE NEXT ACADEMIC YEAR  
CALL US ON 020 8444 4413 OR 020 3137 1155**